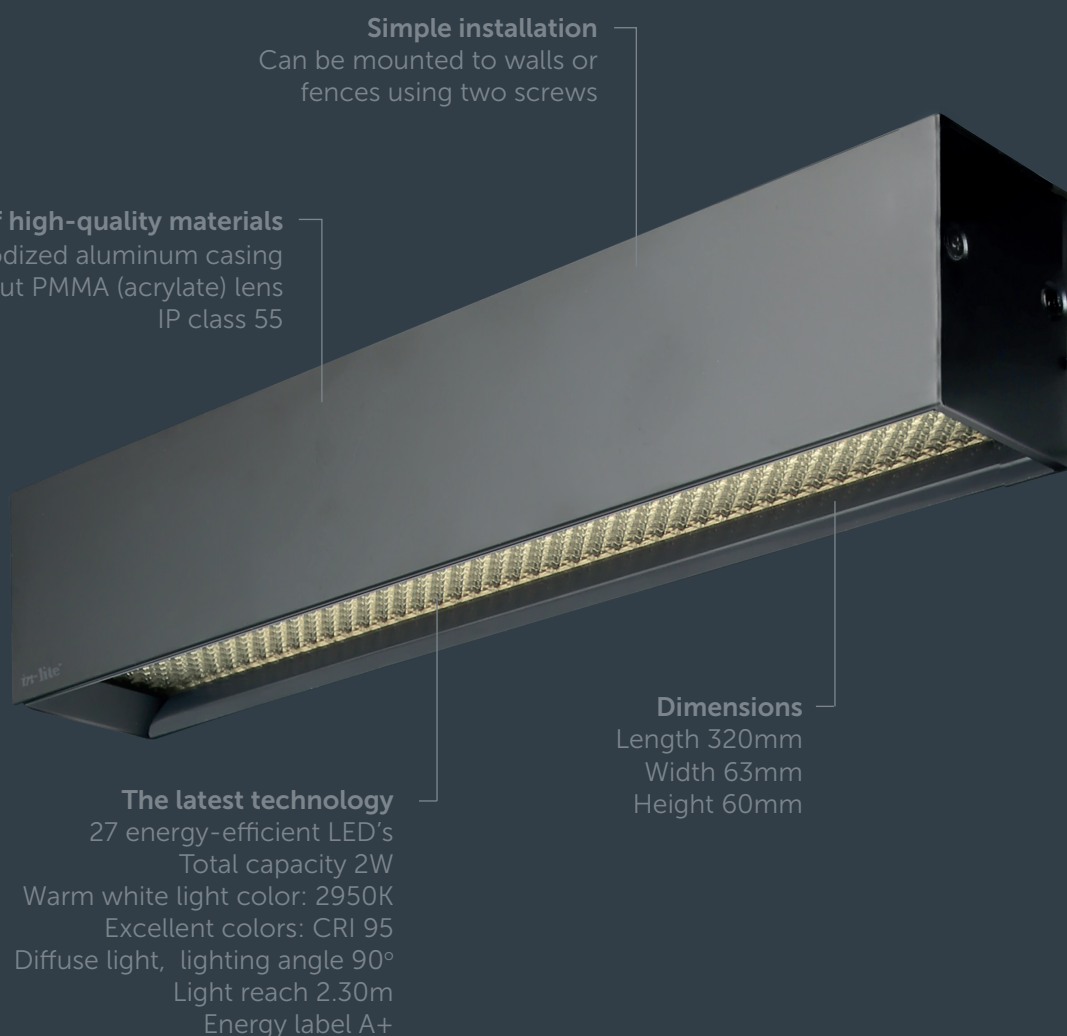


EVO DOWN DARK

WALL



Simple installation

Can be mounted to walls or fences using two screws

Use of high-quality materials

Anodized aluminum casing
Diamond cut PMMA (acrylate) lens
IP class 55

The latest technology

27 energy-efficient LED's
Total capacity 2W
Warm white light color: 2950K
Excellent colors: CRI 95
Diffuse light, lighting angle 90°
Light reach 2.30m
Energy label A+

Dimensions

Length 320mm
Width 63mm
Height 60mm

in-lite®

EVO DOWN DARK

The EVO DOWN DARK allows us to introduce a wall fixture with a streamlined, architectonic design. The fixture features a casing made from high-quality anodized aluminum. This gives it a stylish appearance and makes it highly resistant against dirt and weather conditions.

All products in the EVO range feature the latest and very best LED's. This means the fixtures are very energy-efficient and help to create very natural colors in your garden. In addition, the fixtures feature a 'diamond cut' lens which

ensures effective and uniform light distribution. The EVO DOWN DARK is thus ideal for decoratively lighting walls, fences and brickwork. It serves as a design object during the day and, in the evening, creates a pleasant lighting effect without blinding you.

Combine EVO DOWN DARK with other products from the EVO range and transform your outdoor space into somewhere you enjoy spending time during the day and in the evening.



in-lite®