



INTRODUCING
CONCEPT NERO

In 2019, the NERO and BIG NERO/BIG NERO NARROW were fully updated. Both fixtures have a more modern design and are equipped with A and A++ LEDs. Thanks to the flat ring, they can be installed in grass, gravel, wood and pavement. The BIG NERO/BIG NERO NARROW also feature in-lite Motion, which makes it possible to tilt the light source using a magnet. This makes it very easy to direct the light source towards the desired object without having to open the fixture. User-friendliness at its best!

in-lite®

NERO & BIG NERO (NARROW)

MAXIMUM LIGHT, DESIGN AND USER-FRIENDLINESS

The NERO boasts a completely new design. It has a stylish inside, flat ring and comes in the color black. The single-chip LED light source in the NERO produces an attractive and sleek lighting effect with a light distribution of at least 8 meters, with an angle of 25 degrees. Perfect for illuminating trees from gravel, grass or wood.

The BIG NERO is now available in two versions: The BIG NERO has a wide beam of light of 49 degrees, while the BIG NERO NARROW has a narrow beam of light of only 18 degrees. This lets you more easily illuminate tall trees with a wide crown (such as old oaks) and tall, column-shaped trees from any type of surface. The BIG NERO fixtures feature the new in-lite motion technology. This makes it possible to tilt the light source without opening the fixture. Simply hold the magnet provided up to the in-lite logo and the light source will tilt automatically. in-lite motion makes it even easier to adapt the light to your yard at any time. User-friendliness at its best!



NERO

The NERO is perfect for illuminating trees from gravel or grass. Thanks to the new design with a flat ring, this fixture can now also easily be installed in stone or wood. The NERO has a light distribution of at least 8 meters and a light angle of 25 degrees. The NERO light source cannot be tilted.

Voltage: 12 V / Output: 3.00 W / Installation value: 4.70 VA / Color temperature: 3100 K CRI: 91 / Net luminous flux: 257 lm / Luminous efficacy: 86 lm / W / IP class: IP 67

BIG NERO

The BIG NERO is the perfect fixture for illuminating tall trees or walls from gravel, grass, pavement or wood. Thanks to in-lite motion, you can easily direct the light precisely towards the tree or wall. The BIG NERO has a light distribution of at least 6 1/2 meters and a light angle of 49 degrees.

Voltage: 12 V / Output: 7.50 W / Installation value: 11.90 VA / Color temperature: 3100 K CRI: 91 / Net luminous flux: 488 lm / Luminous efficacy: 65 lm / W / IP class: IP 67

BIG NERO NARROW

Want to illuminate a tall, narrow tree or wall from gravel, grass, pavement or wood? The BIG NERO NARROW is the best fixture to use. The BIG NERO has a light distribution of at least 14 meters and a light angle of 18 degrees. The light source can easily be tilted in the right directing using the in-lite motion technique.

Voltage: 12 V / Output: 7.50 W / Installation value: 11.90 VA / Color temperature: 3100 K CRI: 91 / Net luminous flux: 476 lm / Luminous efficacy: 63 lm / W / IP class: IP 67

Installation guidelines

Want to include the BIG NERO/ BIG NERO NARROW in your lighting plan? Make sure to only use the 10/2 cable and do not exceed the maximum cable length of 40 meters or maximum number of fixtures. HUB 50: up to four BIG NERO or BIG NERO NARROW fixtures and the HUB-100: up to seven fixtures.



NERO

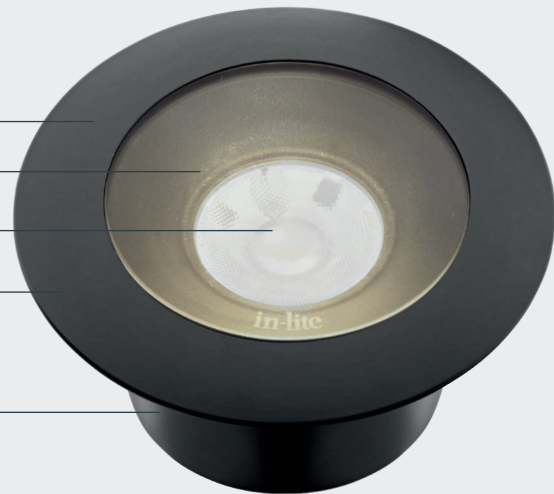
130 mm ring – 116 mm drilled hole

World leading Ledil® lens

Label A++ Single Chip LED

Aluminum ring with
long-lasting FCBV coating

High-quality plastic ground stake



BIG NERO (NARROW)

170 mm ring – 142 mm drilled hole

Aluminum ring with
long-lasting FCBV coating

World leading Ledil® lens

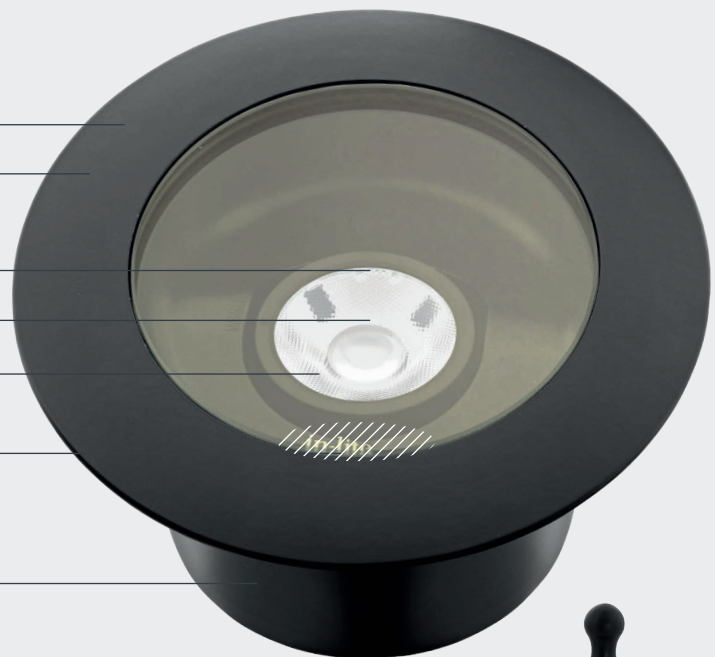
Label A Single Chip LED

in-lite motion tilting light source

in-lite motion area: place the
magnet here to tilt the light source

High-quality aluminum ground stake

Includes magnet for tilting light source
in BIG NERO and BIG NERO NARROW



BIG NERO & BIG NERO NARROW
are fitted with

in-lite | motion

in-lite®